



全漢企業股份有限公司
SPI Electronic Co.,Ltd.

台灣 桃園市建國東路 22 號
NO.22, Jianguo E. Rd., Taoyuan City, Taiwan, R.O.C.
TEL:+886-3-375-9888 FAX:+886-3-375-6966

SPECIFICATION

FX700-GLN

Main Feature:
High Efficiency
Active PFC Circuit
Full Range Input

MAR 14,2005
REV:01



全漢企業股份有限公司
SPI Electronic Co.,Ltd .

MODEL: FX700-GLN

Revision History

<u>Rev</u>	<u>Description</u>	<u>Date</u>	<u>Author</u>
1.0		2005/03/14	

1. GENERAL DESCRIPTION AND SCOPE

This is the specification of Model FX700-GLN; AC-line powered switching power supply with active PFC (Power Factor Correction) circuit, meet EN61000-3-2 and with Full Range Input features.

The specification below is intended to describe as detailedly as possible the functions and performance of the subject power supply. Any comment or additional requirements to this specification from our customers will be highly appreciated and treated as a new target for us to approach.

2. REFERENCE DOCUMENTS

The subject power supply will meet the EMI requirements and obtain main safety approvals as following:

2.1 EMI REGULATORY

- FCC Part 15 Subpart J, Class 'B' 115 Vac operation.
- CISPR 22 Class 'B' 230 Vac operation.

2.2 SAFETY

- NEMKO EN 60950
- TUV EN60950 OR VDE EN60950
- CSA-C22.2 NO. 60950
- IEC 60950
- UL 60950
- CE :
EN 55022:1998+A1: 2000, Class B
EN 61000-3-2: 2000
EN 61000-3-3: 1995+A1: 2001

- CISPR22: 1997+A1: 2000, Class B
AS/NZS CISPR 22: 2002, Class B

3. INPUT ELECTRICAL SPECIFICATIONS

3.1. AC INPUT

Parameter	Min.	Nom. ⁽¹⁾	Max.	Unit
V _{in} (115VAC)	99	115	132	VAC _{rms}
V _{in} (230VAC)	180	230	264	VAC _{rms}
V _{in} Frequency	47	--	63	HZ

◆ Nominal voltages for test purposes are considered to be within $\pm 1.0V$ of nominal.

3.2. INRUSH CURRENT

(Cold start – 25 deg. C)

115V	No damage
230V	No damage

Maximum inrush current from power-on (with power on at any point on the AC sine) and including, but not limited to, three line cycles, shall be limited to a level below the surge rating of the input line cord, AC switch if present, bridge rectifier, fuse, and EMI filter components. Repetitive ON/OFF cycling of the AC input voltage should not damage the power supply or cause the input fuse to blow.

3.3. INPUT LINE CURRENT

115V	8 Amps – rms maximum
230V	4 Amps – rms maximum

3.4. EFFICIENCY

3.4.1 General

Under the load conditions defined in Table 1 and Table 2. The loading condition for testing efficiency shown in Table 1 represents a fully loaded system. a ~ 50% (typical) loaded system. and a ~ 20% (light) loaded system

Table. 1 Loading Table for Efficiency Measurements

700W (loading shown in Amps)								
Loading	5V	3.3V	12V1	12V2	12V3	12V4	-12V	+5Vsb
Full	10	10	13	13	12	12	0.5	2
Typical	5	5	6.5	6.5	6	6	0.25	1
Light	0.5	0.8	3	3	2.5	2.5	0.1	1

Table 2. Minimum Efficiency Vs Load

Loading	Full load	Typical load	Light load
115V Required Minimum Efficiency	78%	80%	75%
230V Required Minimum Efficiency	80%	83%	78%

3.5 MECHANICAL SPECIFICATIONS

The mechanical drawing of the subject power supply, which indicate the form factor, location of the mounting holes, location, the length of the connectors, and other physical specifications of the subject power supply. Please refer to the attachment drawing.

4.0. OUTPUT ELECTRICAL REQUIREMENTS

4.1 OUTPUT VOLTAGE AND CURRENT RATING

Output	MINIMUM LOAD	NORMAL LOAD	MAXIMUM LOAD	LOAD REG	LINE REG.	RIPPLE & NOISE	RIPPLE
+3.3 V	0.8A	18A	36A	±5%	±1%	100mV P-P	50mV P-P
+5 V	0.5A	15A	30A	±5%	±1%	100mV P-P	50mV P-P
+12V1	0A	9A	18A	±5%	±1%	200mV P-P	120mV P-P
+12V2	0A	9A	18A	±5%	±1%	200mV P-P	120mV P-P
+12V3	0.9A	9A	18A	±5%	±1%	200mV P-P	120mV P-P
+12V4	0.1A	9A	18A	±5%	±1%	200mV P-P	120mV P-P
-12V	0A	0.25	0.5A	±10%	±1%	200mV P-P	120mV P-P
+5VSB	0A	1.5A	3.0 A	±5%	±1%	100mV P-P	50mV P-P

(1) +3.3V & 5V total output not exceed 155W.

(2) total output current for this subject power supply is 70A

(3) maximum combined current for the 12V outputs shall be 50A

(4) total output for this subject power supply is 700W watts

(5) The maximum continuous power rating of supply is 700W at 40°C De rate 5W/°C from 40°C to 50°C

4.2. LOAD CAPACITY SPECIFICATIONS

The cross regulation defined as follows, the voltage regulation limits DC include DC Output ripple & noise.

LOAD	STM.	+3.3V	+5V	12V1	12V2	12V3	12V4	-12V	+5VSB
FULL LOAD	MMHHMMHH	10A	10A	18A	18A	7A	7A	0.5A	2A
FULL LOAD	HLMMMMMH	36A	7.2A	6.7A	6.7A	6.7A	6.7A	0.5A	0A
FULL LOAD	LHMMMMLL	1.5A	30A	10A	10A	9A	9A	0.5A	0A
+3.3V MAX other MIN	HLLLLLLH	36A	0.5A	1A	1A	1A	1A	0A	0A
+5V MAX Other MIN	LHLLLLLL	0.8A	20A	1A	1A	1A	1A	0A	0A
+12VDC MAX Other MIN	LLMMHLL	0.8A	2A	7A	7A	18A	18A	0A	0A
-12VDC MAX Other MIN	LLLLLLHL	0.8A	0.5A	0A	0A	0.9A	0.1A	0.5A	0A
+5VSB MAX other MIN	LLLLLLH	0.8A	0.5A	0A	0A	0.9A	0.1A	0A	3A
ALL MIN	LLLLLLL	0.8A	0.5A	0A	0A	0.9A	0.1A	0A	0A

4.3. HOLD-UP TIME (@ 90% FULL LOAD)

115V / 60Hz : 17 mSec. Minimum.

230V / 50Hz : 17 mSec. Minimum.

The output voltage will remain within specification, in the event that the input power is removed or interrupted, for the duration of one cycle of the input frequency. The interruption may occur at any point in the AC voltage cycle. The power good signal shall remain high during this test.

4.4.OUTPUT RISE TIME

(10% TO 95% OF FINAL OUTPUT VALUE, @FULL LOAD)

115V-rms or 230V-rms	+ 5Vdc/3.3Vdc : 20ms Maximum
115V-rms or 230V-rms	+ 12Vdc : 20ms Maximum
115V-rms or 230V-rms	+ 5Vsb : 25ms Maximum
115V-rms or 230V-rms	- 12Vdc : 20ms Maximum

4.5.OVER VOLTAGE PROTECTION

Voltage Source	Protection Point
+3.3V	3.76V-4.8V
+5V	5.6V-7.0V
12VDC	13.5V-15.6V

4.6.OVE-CURRENT PROTECTION

OUTPUT VOLTAGE	Max. overcurrent limit
+3.3V	60A
+5V	48A
12V1	22A
12V2	22A
12V3	22A
12V4	22A

4.7.SHORT CIRCUIT PROTECTION

Output short circuit is defined to be a short circuit load of less than 0.1 ohm.

In the event of an output short circuit condition on +3.3V, +5V ,+12V1,+12V2,+12V3 or 12V4 output, the power supply will shutdown and latch off without damage to the power supply.The power. supply shall return to normal operation after the short circuit has been removed and the power switch has been turned off for no more than 2 seconds.

In the event of an output short circuit condition on –12V output, the power supply will not be damaged. The power supply shall return to normal operation as soon as the short circuit has been removed. and the power switch has been turned off for no more than 2 seconds.

4.8. POWER SIGNAL

POWER GOOD @ 115/230V,FULL LOAD	100 –500mSec.
POWER FAIL @115/230V, FULL LOAD	1 mSec. minimum

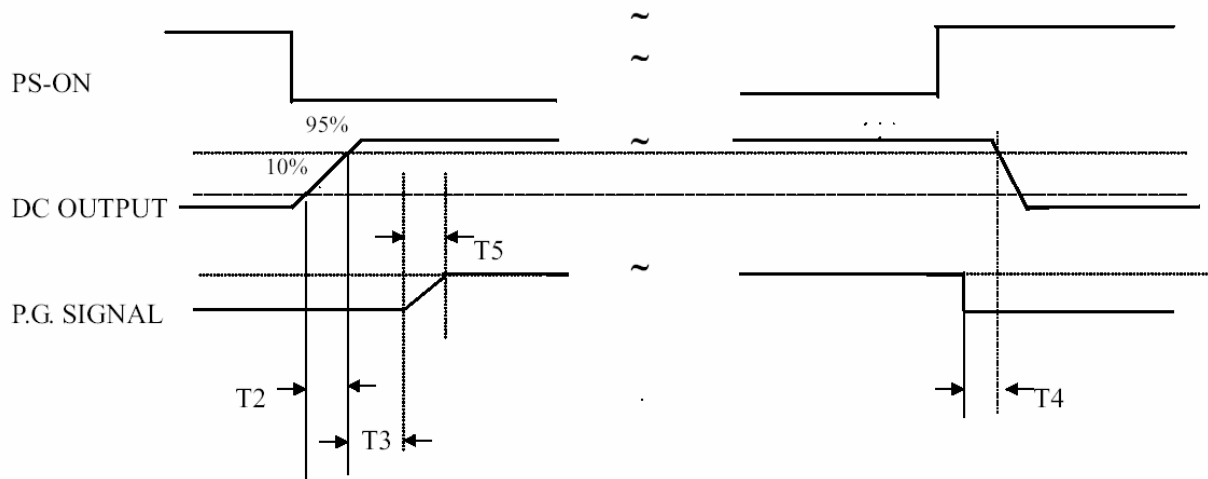


Figure 1

T2 : RISETIME < 20mS

T3 : POWER GOOD DELAY TIME 100mS-500mS

T4 : POWER FAIL DELAY TIME > 1mS

T5 : POWER GOOD RISETIME ≤ 10mS

5.0 ENVIRONMENTAL REQUIREMENTS

The power supply will be compliant with each item in this specification for the following Environmental conditions.

5.1. TEMPERATURE RANGE

Operating	0 to +50 deg. C
Storage	-20 to +80 deg. C

The maximum continuous power rating of supply is 700W at 40°C.

De-rate 5W/°C from 40°C to 50°C.

The maximum continuous power rating of supply is 650W at 50°C.

5.2. HUMIDITY

Operating	5 –95% RH, Non-condensing
Storage	5 –95% RH, Non-condensing

5.3. VIBRATION

The subject power supply will withstand the following imposed conditions without experiencing non-recoverable failure or deviation from specified output characteristics.

Vibration Operating – Sine wave excited, 0.25 G maximum acceleration, 10-250 Hz swept at one octave / min. Fifteen minute dwell at all resonant points, where resonance is defined as those exciting frequencies at which the device under test experiences excursions two times large than non-resonant excursions.

Plane of vibration to be along three mutually perpendicular axes.

5.4 GROUND LEAKAGE CURRENT

The power supply ground leakage current shall be less than 3.5 mA.

5.5 RELIABILITY

The power supply reliability, when calculated by MIL-HDBK-217; latest revision, are exceed 100,000 hours with all output at maximum load and an ambient temperature of 25°C.

5.6 DIELECTRIC STRENGTH

Primary to Frame Ground : 1800 Vac for 1 sec.

Primary to Secondary : 1800Vac for 1 sec

5.7 INSULATION RESISTANCE

Primary to Frame Ground : 20 Meg.ohms Minimum

Primary to Secondary : 20 Meg.ohms Minimum

6.0. LABELLING

Label marking will be permanent, legible and complied with all agency requirements.

6.1. MODEL NUMBER LABEL

Labels will be affixed to the sides of the power supply showing the following:

- Manufacturer's name and logo.
- Model no., serial no., revision level, location of manufacturer.
- The total power output and the maximum load for each output.
- AC input rating.