



全漢企業股份有限公司

電氣規格書

版次 : 10
 文件編號 : ESD03008680
 附件版本 : 04
 作者 : 黃銀山
 客戶 :
 製造商名稱 :
 Model No/Type : FSP400-60PNU
 備註 : 增加 9PA4000605
 安規要求取消 5.1 :CSA 安規
 送簽 : RD1 共用帳號
 研發部門 : RD1
 機密 : N
 編號 :
 發行日期 : 2003/11/19-18:23:44
 ISO 編號 :



單位	姓名	單位	姓名	單位	姓名
安規 1	周懿慧 Chow	產品工程 1	黃銀山 Jhon	主管	陳炳旭 Phc
文件發行	蕭雅鶴 Nora				

相關料號：

9PA4000600

FSP400-60PNU,ATX,SPS,S,W/NK,W/IO,WO/O,W/SS,FSP,WO/PFC,5L1S,STD,INTEL,WO/AUTO,RD1

9PA4000602

FSP400-60PNU(F062),ATX,SPS,S,W/NK,W/IO,WO/O,W/SS,FSP,WO/PFC,5L1S,INTEL,WO/AUTO,9PA4000600,RD1

9PA4000601

FSP400-60PNU(F061),ATX,SPS,S,W/NK,W/IO,WO/O,W/SS,FSP,WO/PFC,5L1S,INTEL,WO/AUTO,9PA4000600,RD1

9PA4000604

FSP400-60PNU(A272),ATX,SPS,B,W/NK,W/IO,WO/O,W/SS,AOPEN,WO/PFC,8L2S,INTEL,WO/AUTO,9PA4000600,RD1

9PA4000603

FSP400-60PNU(A271),ATX,SPS,B,W/NK,W/IO,WO/O,W/SS,AOPEN,WO/PFC,8L2S,INTEL,WO/AUTO,9PA4000600,RD1

PSSK400004 FSP400-60PNU(R),SILENT

KIT,INTEL,FSP,CPU

COLLER(DS7020-12MCTA-D-01),SYSTEM FAN(DS9225-12LLBTA),4PA00005

PSSK400001 FSP400-60PNU(R),SILENT

KIT,INTEL,FSP,CPU

COOLER(DS7020-12MCTA-D-01),SYSTEM FAN(DS9225-12LLBTA),4PF00003

PSSK400007 FSP400-60PNU(R),SILENT

KIT,AMD,FSP,CPU

COOLER(FCC-3S02),SYSTEM FAN(DS9225-12LLBTA),4PA00005

PSSK400008 FSP400-60PNU(R),SILENT

KIT,AMD,FSP,CPU

COOLER(FCC-3S02),SYSTEM FAN(DS9225-12LLBTA),4PF00003

9PA4000800

FSP400-60PNU(R),ATX,SPS,B,W/NK,W/IO,WO/O,W/SS,FSP,WO/PFC,8L1S,STD,INTEL,WO/AUTO,RD1

9PA4000605

FSP400-60PNU(C241),ATX,SPS,S,W/NK,W/IO,WO/O,W/SS,FSP,WO/PFC,5L1S,INTEL,WO/AUTO

台灣 桃園市建國東路 22 號

No. 22, Jianguo E. Rd., Taoyuan City, Taiwan, R.O.C.

TEL : +886-3-375-9888 FAX : +886-3-375-6966



全漢企業股份有限公司
SPI Electronic Co., Ltd.

台灣 桃園市建國東路 22 號
NO.22,jianguo E,Rd.,Taoyuan City, Taiwan,R.O.C.
TEL:+886-3-375-9888 FAX:+886-3-375-6966

SPECIFICATION

MODEL NO.: FSP400-60PNU

P/N :

DATE:NOV,19, 2003

REV : 4

表單編號 : 7000-0105

TABLE OF CONTENTS	PAGE
1. GENERAL REQUIREMENTS	3
2. INPUT REQUIREMENTS	3
3. OUTPUT REQUIREMENTS	3
3.1 OUTPUT VOLTAGE AND CURRENT	3
3.2 REMOTE ON/OFF CONTROL	4
3.3 OUTPUT VOLTAGE HOLD-UP TIME	4
3.4 OPERATION AT NO LOAD	4
3.5 PROTECTION	4
3.6 OUTPUT RISE TIME	5
3.7 OUTPUT OVERSHOOT	5
3.8 EFFICIENCY	5
3.9 POWER GOOD SIGNAL	5
3.10 POWER FAIL SIGNAL	6
3.11 POWER ON TIME	6
4. PHYSICAL ENVIRONMENT	6
4.1 OPERATING CONDITIONS	6
4.2 STORAGE AND SHIPPING CONDITIONS	7
4.3 SHOCK AND CONDITIONS	7
5. REGULATORY COMPLIANCE	7
5.1 SAFETY REQUIREMENTS	7
5.2 DIELECTRIC STRENGTH	7
5.3 INSULATION RESISTANCE	7
5.4 GROUND LEAKAGE CURRENT	7
5.5 EMISSION REQUIREMENTS	7
6. OTHER REQUIREMENTS	8
6.1 COOLING	8
6.2 INPUT CONNECTIONS AND CONTROLS	8
6.3 RELIABILITY	8
7 REVISION HISTORY	8

1.0 GENERAL REQUIREMENTS

This specification describes a 400 watts power supply. With +5V stand-by, remote ON/OFF control for ATX system.

2.0 INPUT REQUIREMENT

The power supply shall operate at 115Vrms \pm 10% or 230Vrms \pm 10% .

The power supply shall operate from an AC mains frequency is 50Hz \pm 3Hz.

The AC mains single-cycle peak inrush current shall be limited to 80 amps cold, 100 amps warm measured at 230 Vrms, 50 Hz and coinciding with the AC main voltage peak.

The AC mains steady-state RMS input current shall be:

10.0 amps maximum / 115 Vrms, 60 Hz

5.0 amps maximum / 230 Vrms, 50 Hz.

3.0 OUTPUT REQUIREMENTS

3.1 OUTPUT VOLTAGE AND CURRENT

	MINIMUM LOAD	NORMAL LOAD	MAXIMUM LOAD	LOAD REG.	LINE REG.	RIPPLE & NOISE
+3.3V	0.3A	13A	28A	\pm 5%	\pm 1%	50mV P-P
+5V	1.0A	15A	30A	\pm 5%	\pm 1%	50mV P-P
+12V	0.3A	8A	18A *	\pm 5%	\pm 1%	120mV P-P
-5V	0.0A	0.15A	0.3A	\pm 10%	\pm 2%	120mV P-P
-12V	0.0A	0.4A	0.8A	\pm 10%	\pm 2%	120mV P-P
+5Vsb	0.0A	1.0A	2.0A	\pm 5%	\pm 1%	50mV P-P

- +12V peak current is 20A/3sec.

(1). +3.3V & +5V total output not exceed 220W.

When +3.3V is load to 28A, the +5V maximum load is 25.5A.

When +3.3V is load to 21.2A, the +5V maximum load is 30A.

(2). +3.3V & +5V & +12V total output not exceed 380W.

(3) All outputs shall be safety-isolated from the AC mains and share a common return. This common return must be connected to supply chassis.

(4) Voltages and ripple are measured at the load side of mating connectors with a 0.1 uF monolithic ceramic capacitor paralleled by a 10 uF electrolytic capacitor across the measuring terminals.

LOAD REGULATION CHARACTERISTICS

NO.	LOAD CONDITION	OUTPUT LOAD					
		+3.3V	+5V	+12V	-5V	-12V	+5Vsb
1	COND.1	28.0A	20.0A	16.0A	0.3A	0.8A	2.0A
2	COND.2	12.1A	30.0A	16.0A	0.3A	0.8A	2.0A
3	COND.3	0.3A	30.0A	8.0A	0.3A	0.8A	2.0A
4	COND.4	28.0A	1.0A	0.3A	0.3A	0.8A	2.0A
5	COND.5	0.3A	1.0A	0.3A	0A	0A	0A
6	COND.6	13A	15A	8.0A	0.15A	0.4A	1.0A
7	COND.7	0.3A	15A	8.0A	0.15A	0.4A	0.5A
8	COND.8	0.3A	5.0A	16A	0.3A	0.8A	2.0A
9	COND.9	12A	25A	20A	0.15A	0.4A	0A

3.2 REMOTE ON/OFF CONTROL

The power supply shall accept a logic open collector level which will disable

/ enable all the output voltage (exclude + 5V standby).

As logic level is low, outputs voltage were enable.

As logic level is high, outputs voltage were disable.

- Note:
1. Logic high level :3.50-5.25V while sourcing 0.4mA maximum.
 2. Logic low level : 0-0.5V while sinking 1.5mA maximum.
 3. Rise Time : 2ms maximum (10%-90%).

3.3 OUTPUT VOLTAGE HOLD-UP TIME

12.0 mS minimum : at 115V / 60 Hz.

12.0 mS minimum : at 230V / 50 Hz.

3.4 OPERATION AT NO LOAD

The power supply shall be capable of being operated with no load on any or all outputs without damage. For no load on +3.3V&+5V, the output shall not exceed +4.5 & +6.5Vdc and the power supply may shutdown and require by remote-control or remove AC power restart.

3.5 PROTECTION

3.5.1 OVER-VOLTAGE PROTECTION

In the event of an over-voltage condition on +3.3 & +5Vdc &+12V the power supply shall shutdown and require remote control or remove the AC mains input to reset the system.

- +5V : 6.5V(maximum)
- +3.3V : 4.6V(maximum)
- +12V : 15.5V(maximum)

3.5.2 OVER-CURRENT PROTECTION

There shall be protection from an output over-current event. The supply may shutdown from such an event and require power-on restart. Testing consists of application of the listed over-current value with maximum load on all other outputs.

Over-current test values: (maximum load)

+3.3V : 80A maximum

+5V : 70A maximum

+12V : 35A maximum

3.5.3 SHORT-CURRENT PROTECTION

A short circuit at any output shall cause no damage to the power supply nor blow the primary fuse. The supply may shut down in the event of a short circuit and require power-on restart. A short circuit consists of application of a test resistance of less than 0.01 ohms at each output with maximum load on all outputs.

3.6 OUTPUT RISETIME

The cold-start enable output voltage risetime of all outputs shall be measured with maximum load on all outputs.

risetime :	+3.3V	20mS (maximum)
(10-90%)	+5V	20mS (maximum)
	+12 V	20mS (maximum)
	-12 V	20mS (maximum)
	+5Vsb	20mS (maximum)

3.7 OUTPUT OVERSHOOT

No output voltage shall overshoot or generate spikes at turn-on or turn-off, during momentary power loss, output short, or realistic input voltage or output load changes, Overshoot is defined as any output that exceeds the voltage tolerance plus or minus an additional 5%.

3.8 EFFICIENCY

Overall efficiency must be 65% minimum measured at normal AC mains voltage and frequency with maximum loads on all outputs.

3.9 POWER GOOD SIGNAL

115V/230V (FULL LOAD) : 100-500mS

3.10 POWER FAIL SIGNAL

115V/230V (FULL LOAD) : 1mS minimum.

3.11 POWER ON TIME

115V/230V(FULL LOAD) : 500mS maximum.

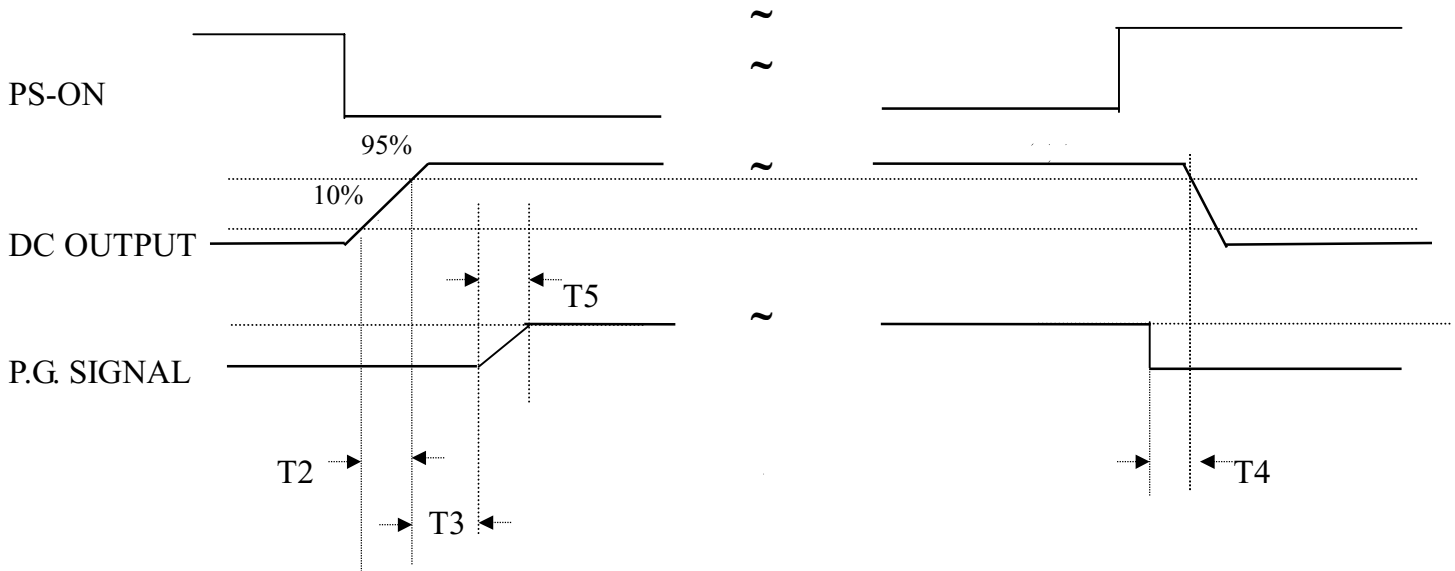


Figure 1

T2 : RISETIME < 20mS

T3 : POWER GOOD DELAY TIME 100mS-500mS

T4 : POWER FAIL DELAY TIME > 1mS

T5 : POWER GOOD RISETIME ≤ 10mS

4.0 PHYSICAL ENVIRONMENT

4.1 OPERATING CONDITIONS

The power supply shall be capable of continuous operation and meet all

electrical specification without need for adjustment when subjected to the following environmental conditions:

4.1.1 AMBIENT TEMPERATURE : 0 TO 50°C

The maximum continuous power rating of supply is 400W at 25°C .De-rate 2W/°C from 25°C to 50°C

4.1.2 RELATIVE HUMIDITY : 90%

4.2 STORAGE AND SHIPPING CONDITIONS

No degradation of the power supply shall occur during shipping or storage at the specified conditions.

4.2.1 AMBIENT TEMPERATURE : -20 TO +65°C

4.2.2 RELATIVE HUMIDITY : 95%

4.3 SHOCK AND VIBRATION

The power supply will withstand the following imposed conditions without experiencing non-recoverable failure or deviation from specified output characteristics.

Storage -40G, 11mSec. half-sine wave pulse in both directions on three mutually perpendicular axes.

Operating -10G, 11mSec. half-sine wave pulse in both directions on three mutually perpendicular axes.

Vibration Operation-Sine wave excited, 0.25G maximum acceleration. 10-250 Hz, swept at one octave/min. Fifteen minute dwell at all resonant points, where resonance is defined as those exciting frequencies at which the device under test experiences excursions two times large than non-resonant excursions.

5.0 REGULATORY COMPLIANCE

5.1 SAFETY REQUIREMENTS

-UL

5.2 DIELECTRIC STRENGTH

Primary to Frame Ground : 1800 Vac for 1 sec.

Primary to Secondary : 1800 Vac for 1 sec.

5.3 INSULATION RESISTANCE

Primary to Secondary : 20 Meg. ohms Minimum.

Primary to FRAME GROUND : 20 Meg. ohms Minimum.

5.4 GROUND LEAKAGE CURRENT

The power supply ground leakage current shall be less than 3.5mA.

5.5 EMISSION REQUIREMENTS

When testing the power supply must operate within the listed requirements.

6.0 OTHER REQUIREMENTS

6.1 COOLING

With the fan voltage set to around 12 volts,
the fan will deliver greater than 30 CFM with the power
supply in open air.

6.2 INPUT CONNECTIONS

Refer to Mechanical Specifications for placement.

The AC mains input are through a three-circuit IEC type connector mounted
on the rear of the power supply chassis.

6.3 RELIABILITY

The power supply reliability, when calculated by MIL-HDBK-217; latest
revision, are exceed 100,000 hours with all output at maximum load and an
ambient temperature of 25°C.

7.0 Revision History:

Rev	Description	Date
2	3.1: -12V LOAD 0.5A→0.8A.	2003/10/7
3	3.1-OUTPUT LOAD +5V LOAD =20,0A→20.0A °	2003/11/6
4	5.1: CANCEL CSA °	2003/11/19